



# **AHCI installation guide**

**V1.0**

**Date : 2009-06-29**

**TWINHEAD INTERNATIONAL CORP.  
10F, 550 Rueiguang Road  
Neihu, Taipei, Taiwan 114 ,ROC.  
TEL(886)2 5589 9999 FAX (886) 2 5555 7777**

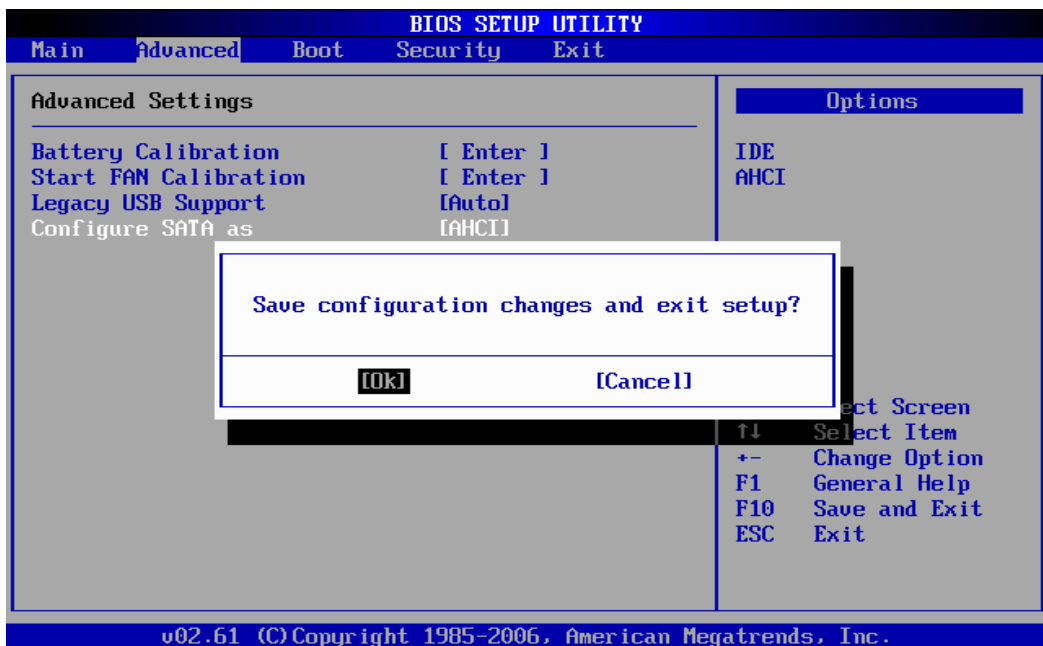
# Enabling AHCI in BIOS

Perform the following steps to enable the AHCI option in the system BIOS:

1. Enter the BIOS Setup program by pressing the **DEL** key after the Power-On-Self-Test (POST) memory test begins.
2. Select the **Advanced** menu, and then the **Configure SATA as** menu.



3. Select the **SATA Mode** option from **IDE** to **AHCI**.
4. Press the **F10** key to save the BIOS settings and exit the BIOS Setup Program.



# Intel® Matrix Storage Manager

How do I install an operating system onto an AHCI mode (F6 install method)?

In order to install an operating system onto an AHCI mode, the AHCI Function must be enabled in the system BIOS, and the F6 installation method must be used to load the Intel® Matrix Storage Manager driver during operating system setup.

**Note:** The F6 installation method is not required for Microsoft Windows Vista\* and Win7\*.

## Create F6 Installation Floppy Disk

<1> Visit INTEL Download Center Web site to download it.

[http://downloadcenter.intel.com/Product\\_Filter.aspx?ProductID=2101&lang=eng](http://downloadcenter.intel.com/Product_Filter.aspx?ProductID=2101&lang=eng)

Download Center

Intel® Matrix Storage Manager

Additional Downloads  
Support Information  
RSS Feed

Select a language for Download Center  
English

## Downloads

### Intel® Matrix Storage Manager

Select your operating system for available downloads.

select your operating system

---- Select ----  
---- Select ----  
Windows\* XP Professional x64 Edition  
Windows\* XP Professional  
Windows\* XP Media Center Edition  
**Windows\* XP Home Edition**  
Windows\* 2000 Advanced Server  
Windows\* 2000  
Windows Vista\* 64  
Windows Vista\* 32  
Windows Vista\*  
Windows Server\* 2008  
Windows Server\* 2003 Standard x64 Edition  
Windows Server\* 2003 Standard Edition  
Windows Server\* 2003 Enterprise x64 Edition  
Windows Server\* 2003  
All Operating Systems

Go!

**Download Assistance**

- For more information on this product, use the product links provided on the left.
- The "OS Independent" option is for downloads which work with any operating system.
- Downloads for this product are available only for the listed operating systems.

Site Map Te oom Contact Us Corporation

<2> Find the Utilities, Tools and Examples .Click Download .

### Utilities, Tools and Examples

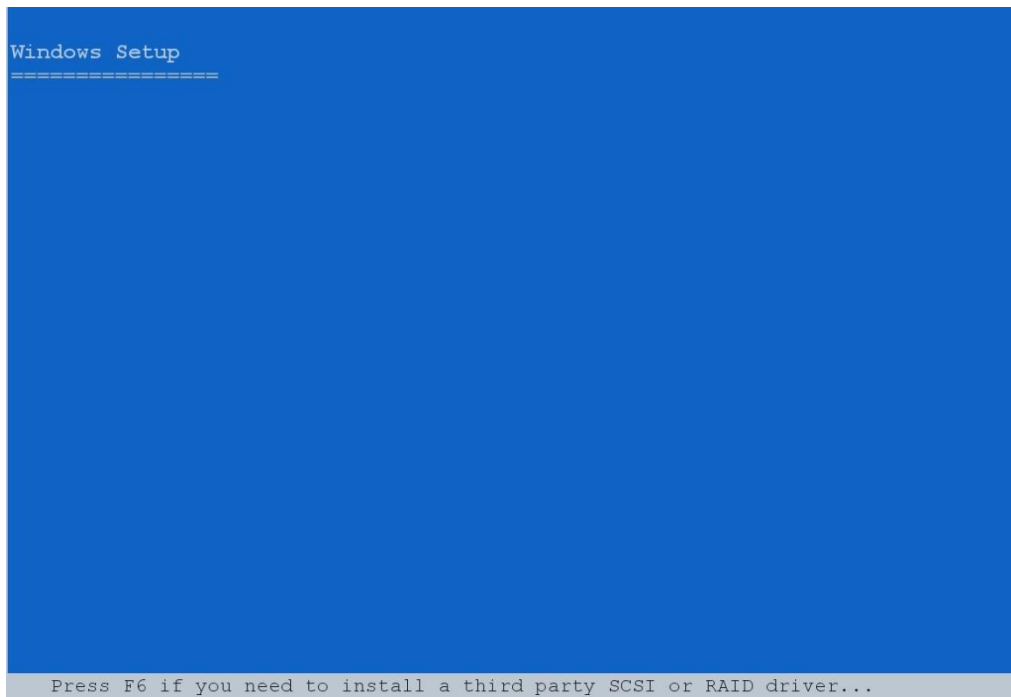
Title	Ver.#	Date	Download
2. 32-bit Floppy Configuration Utility for Intel® Matrix Storage Manager (197KB) Creates floppy disk for 32-bit OS with Intel® Matrix Storage Manager 8.2.0.1001 files - used to preinstall RAID driver (F6 during Windows* setup).	8.2.0.1001	6/2/2008	
<a href="#">Read Me</a> (txt)			
OS:Windows Server* 2003, Windows Server* 2003 Standard Edition, Windows Server* 2008, Windows Vista*, Windows Vista* 32, <b>Windows* XP Home Edition</b> , Windows* XP Media Center Edition, Windows* XP Professional			

<3> Unzip the Utilities, and copy the files onto floppy disk.

## F6 Installation Method

Perform the following steps to install the Intel Matrix Storage Manager driver during operating system setup:

1. Press the **F6** key when prompted in the status line with the *Press F6 if you need to install AHCI mode*. This message appears at the beginning of Windows\* XP setup (during text-mode phase).

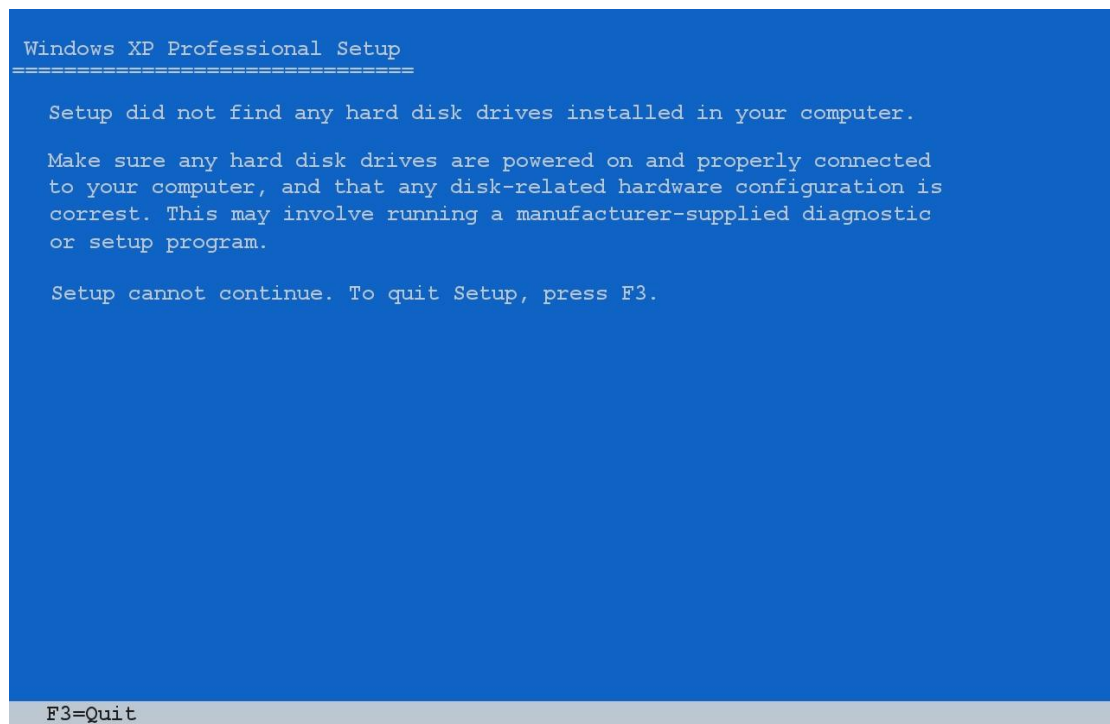


**Note:** Nothing will happen immediately after pressing F6. Setup will temporarily continue loading drivers. You will then be prompted with a screen asking you to load support for mass storage device(s).

2. Press the **S** key to **Specify Additional Device**.
3. You will be prompted to *Please insert the disk labeled Manufacturer-supplied hardware support disk into Drive A:* When prompted, insert the floppy disk containing the following files: IAAHCI.INF, IAAHCI.CAT, IASTOR.INF, IASTOR.CAT, IASTOR.SYS, and TXTSETUP.OEM and press the **Enter** key.
4. After pressing Enter, you should be presented with a list of available floppy disk. Select your controller from the list. The up and down arrow keys can be used to scroll through the list as all controllers may not be visible. The list may include: ( Select the ICH-X AHCI Controller for your platform )

- Intel® ESB2 SATA AHCI Controller
  - Intel® ICH7R/DH SATA AHCI Controller
  - Intel® ICH7M/MDH SATA AHCI Controller
  - Intel® ICH8R/DH/DO SATA AHCI Controller
  - Intel® ICH8M-E/M SATA AHCI Controller
  - Intel® ICH9R/DO/DH SATA AHCI Controller
  - Intel® ICH9M-E/M SATA AHCI Controller
5. The next screen should confirm your selected controller. Press the **Enter** key again to continue.
  6. At this point, you have successfully in the Intel Matrix Storage Manager driver and Windows setup should continue. Leave the floppy disk in the floppy drive until the system reboots. Windows setup will need to copy the files from the floppy again to the Windows installation folders. Once Windows setup has copied these files again, you should then remove the floppy diskette so that Windows setup can reboot as needed.

**Note:** If you wish to use the Intel Matrix Storage Manager graphical user interface in Windows, you will need to install the Intel Matrix Storage Manager by running the Setup.exe process after these steps have been completed and the operating system has been successfully installed.



**Note:** If you enabling AHCI in BIOS, but you didn't press **F6 key** while Windows XP installing

You will see the error like this , and you need to press **F3 key** to quit setup .

- End -

**You also can visit INTEL Support Web site to get more information as below link:**

<http://support.intel.com/support/chipsets/imsm/>